

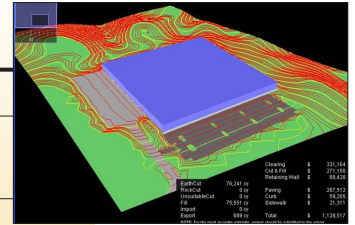
# PRODUCTS AND SERVICES

## Georgia Power Community & Economic Development

Georgia Power's Community & Economic Development team has an array of products and services available to help you make your expansion decision – AND THEY'RE ALL AVAILABLE TO YOU AT NO CHARGE! Below, we've grouped our most common services related to Facility Expansion into three categories, based on your stage of the decision process, but all packages can be customized to your needs. Just consult with your regional Georgia Power Community & Economic Development manager listed on the back.



<b>FACILITY EXPANSION PACKAGE — CHOOSE A PLAN</b>	<b>BASIC</b>	<b>ADVANCED</b>	<b>PREMIER</b>
Site feasibility study w/flood zone & wetlands analysis	•	•	•
Preliminary building design/layout W/ site engineering & parking plan/truck court design	•	•	•
Site infrastructure analysis – electrical, water, sewer, gas, telecom	•	•	•
Incentive/tax credit/employee training eligibility verification	•	•	•
Labor analysis	•	•	•
Workforce educational attainment data	•	•	•
Commuted of available workforce	•	•	•
Cut and fill analysis for site development cost estimation	Optional	•	•
Rail spur extension design	Optional	•	•
Occupational breakdown of available workers	Optional	•	•
Soil/air (non-attainment) analysis	Optional	Optional	•
3-D model of building w/ virtual tour	Optional	Optional	•
Pipeline of graduates (history) matching needed skills	Optional	Optional	•
GIS and demographic customized mapping	Optional	Optional	•
Connectivity with local and state regulatory agencies for special permitting	Optional	Optional	•



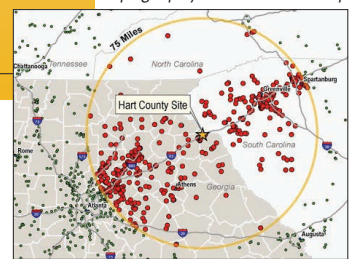
*Cut & Fill Analysis*



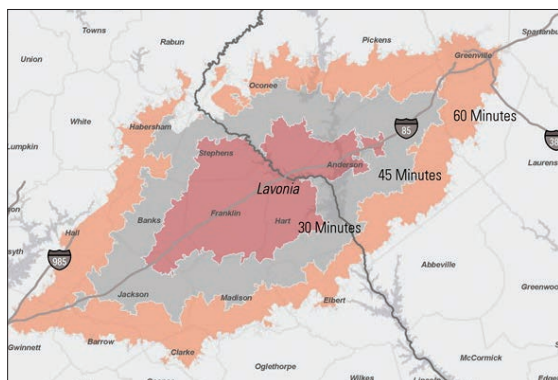
*Aerial Building Site Plan*



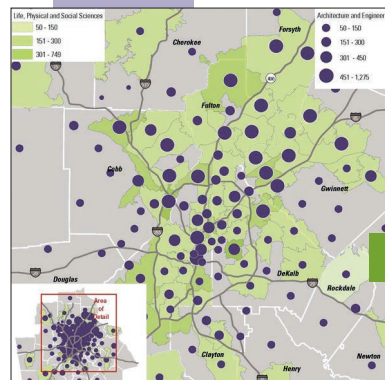
*Topography & Wetlands Map*



*Automotive Equipment Map*



*Workforce Availability Map*



*Occupational Availability Map*

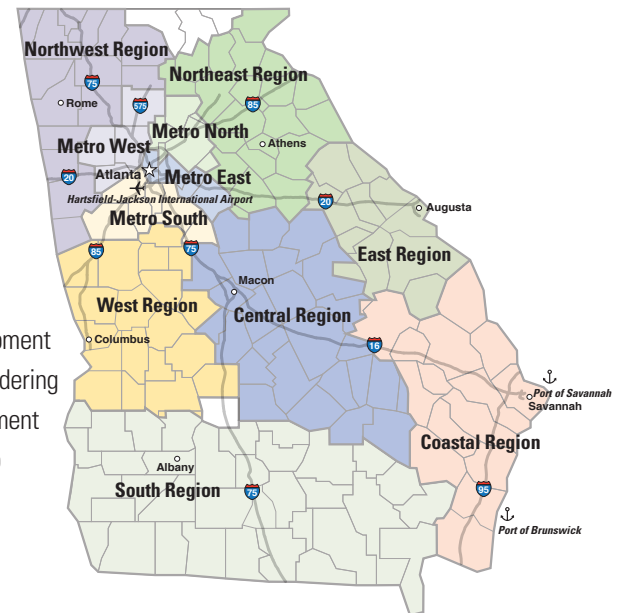
[SELECTGEORGIA.COM](http://SELECTGEORGIA.COM)



# COMMUNITY DEVELOPMENT MANAGERS

## Georgia Power Community & Economic Development

Georgia Power has a long history of community and economic development, helping Georgia's communities grow and prosper for more than 80 years. Our community development professionals help with existing industry retention, expansion, and new companies considering the region. They also work with state, regional and local partners on leadership development and strategic planning. Georgia Power is an active partner in creating programs that help improve the quality of life and bring new business to the communities it serves.



**Odessa Archibald, EDFP, Metro South and Metro West**  
Odessa began her career at Georgia Power in 2003, after holding positions in public policy and economic development at the national, state and regional levels.  
**404.506.2207 • oarchiba@southernco.com**



**Elyse Cochran-Davis, CCE, Northwest Region**  
Elyse joined the Georgia Power team in 2014. She previously served in leadership positions in chambers of commerce and development authorities in Georgia and North Carolina, helping communities prepare for successful economic development outcomes.  
**706-512-2177 • edavis@southernco.com**



**Jason Coley, Coastal Region**  
Jason's career at Georgia Power began in 1994. His background includes marketing, customer service, engineering and local management. He joined the C&ED team in 2015.  
**912-306-1702 • jfcoley@southernco.com**



**Matt Forshee, East Region**  
Matt joined the Georgia Power team in 2014, after serving as President & CEO of the Fayette County Development Authority in the metro Atlanta area. Prior to the Fayette County position, Matt led the Athens Economic Development Foundation in Clarke County, Georgia.  
**706.650.5104 • mwforshe@southernco.com**



**Lauren Lambiase, Metro East and Metro North**  
Lauren began her career with Georgia Power in 2015, after working with the Georgia Dept. of Economic Development, the Gwinnett Chamber of Commerce and the Georgia Hispanic Chamber of Commerce.  
**404.506.7497 • llambias@southernco.com**



**Jim Lovett, EDFP, Central Region**  
Jim began his career with Georgia Power in 1982. He has worked in many areas of the company, including region operations, finance, corporate services, and legislative affairs.  
**229.387.3305 • jslovet@southernco.com**



**Scott Purvis, South Region**  
Scott joined the Georgia Power team in 2011, after 13 years with the Georgia Dept. of Community Affairs. Prior to working with the state, Scott had extensive experience in city and county administration.  
**229.241.2228 • mspurvis@southernco.com**



**Rope Roberts, Northeast Region**  
Rope's career at Georgia Power began in 1979. He has a background in accounting, procurement and corporate communication.  
**706.499.6515 • jerobert@southernco.com**



**Clint Taylor, West Region**  
Clint began his career with Georgia Power in 1976. He has worked in many areas of the company, including region operations, customer service, marketing and local management.  
**706.321.3502 • cjtaylor@southernco.com**

### Community & Economic Development

241 Ralph McGill Boulevard  
Bin 10190  
Atlanta, Georgia 30308

**Johnna Robinson, Manager**  
404-506-7935  
joathoma@southernco.com

